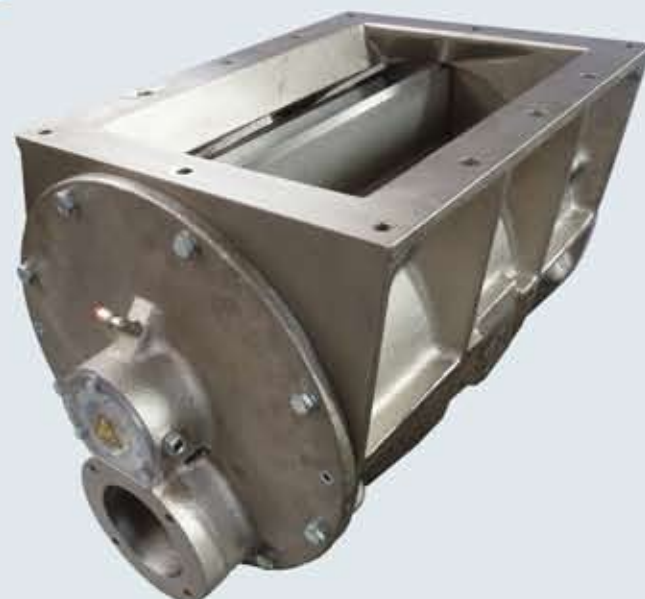


VSFC ROTARY VALVE is designed to discharge containers holding powders and granules. Thanks to COMAV'S TECHNOLOGY can be used upon all hard applications, assuring an average discharge time of 50/60 minutes per 30" Container.

The valve capacity and its shape meet the main logistic companies needs.



APPLICATIONS

- ON CHASSIS
- GENERAL PNEUMATIC CONVEYING
- POWDER
- GRANULE
- MOCA – EC1935/2004

DESIGN

- FLANGING: RECTANGULAR
- SIZE: 320
- HOUSING: CAST IRON CASTING, SS304 OR SS316L CASTING
- ROTOR: WELDED CARBON STEEL OR SS304, SS316L
- DRIVE: DIRECT DRIVE, CHAIN TRANSMISSION, ELECTRIC OR HYDRAULIC MOTOR AVAILABLE IN BARE SHAFT VERSION.
- ROBUST & COMPACT DESIGN WITH MINIMAL ROTOR TOLERANCE

FEATURES

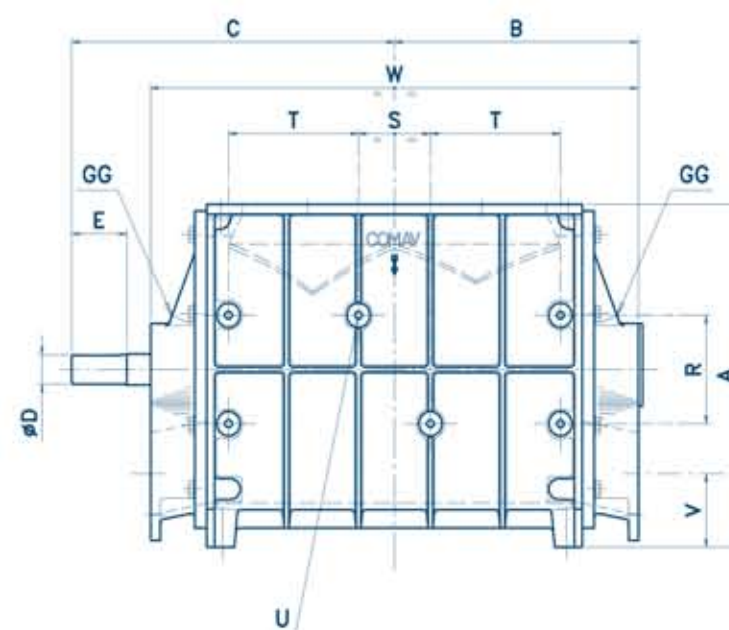
- PRESSURE: -0,5 BAR, +2 BAR
- MAX PRESSURE FOR HYDRAULIC MOTOR: 70 BAR
- QUANTITY OF REQUEST OIL : 50 KG/MIN (IN CASE OF HYDRAULIC MOTOR)
- TEMPERATURE: MAX 65 °C
- ROTATION SPEED: 42 RPM MAX
- INTEGRATED CASTING INNER HOPPER (BETTER FILLING EFFICIENCY)
- OPEN ENDS ROTOR UP TO 10 VANES

OPTIONALS

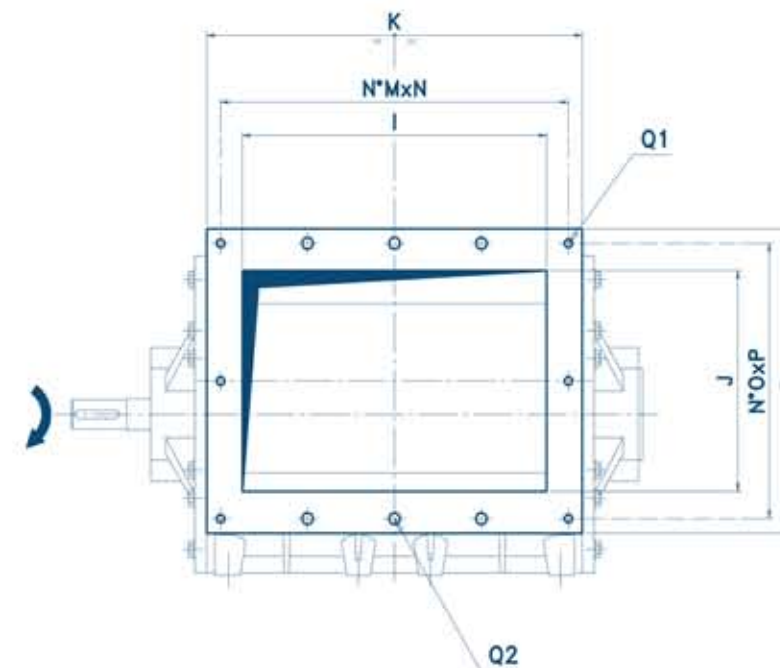
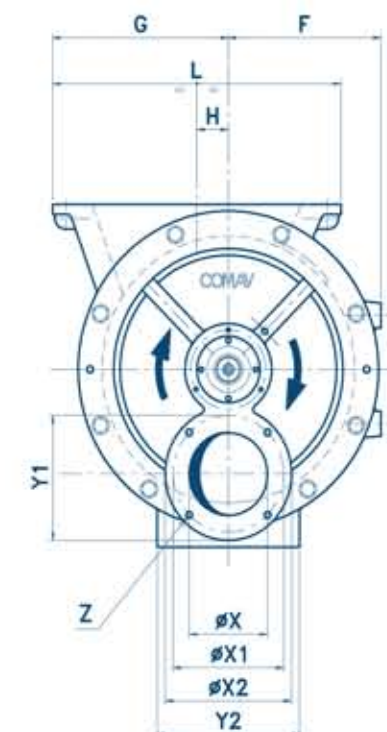
- DIFFERENT ROTORS FOR DIFFERENT PRODUCTS
- NICKEL COATING EC1935/2004
- HARD CHROMIUM PLATING
- VARIOUS POLISHING DEGREES
- HIGH TEMPERATURE CONFIGURATION
- FEEDING SHOE
- FEEDING HOPPER COMPLETE WITH FLAP VALVE
- AIR BLOW-IN PURGE
- AIR INTAKE HOLE ON HOUSING
- SPEED DISPLAY
- SPEED CONTROLLER



FRONTAL VIEW



SIDE VIEW



FLANGING VIEW

	A	B	C	D	E	F	G	H	I	J	K	L	M	N	O	P	Q1	Q2
320	411	309	409	∅35	70	193	222,5	40	385	265	475	365	4	110	2	165	M12	∅14
	R	S	T	U	V	W	X	X1	X2	Y1	Y2	Z	L/Rev.	WEIGHT	GG			
320	130	91	164,5	M10	88	617	∅99	∅140	∅160	150	180	M10	29	Kg 170	1/8" GAS			

BROCHURE

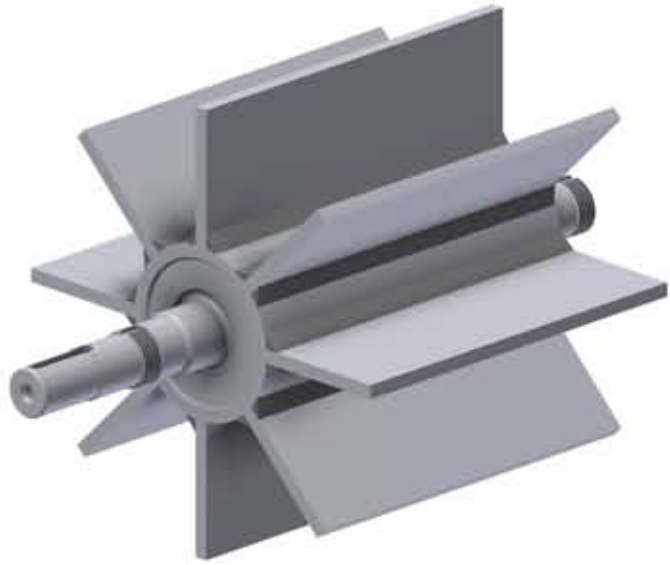


COMPLIANCE

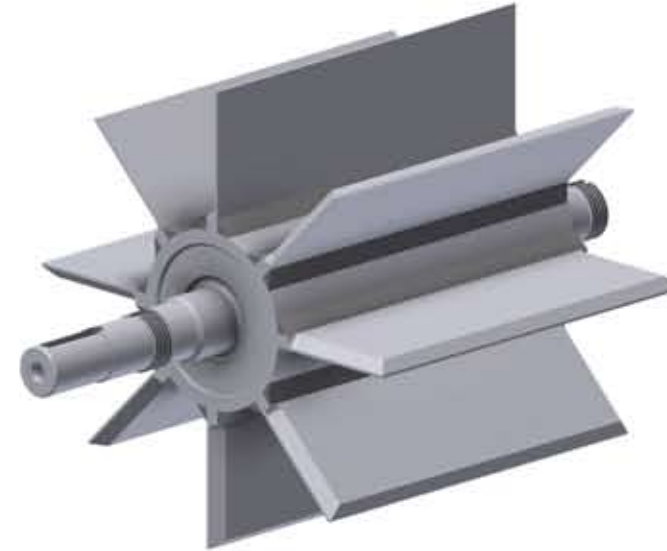


1/30 IIC T135°C Da/De x

ROTORS

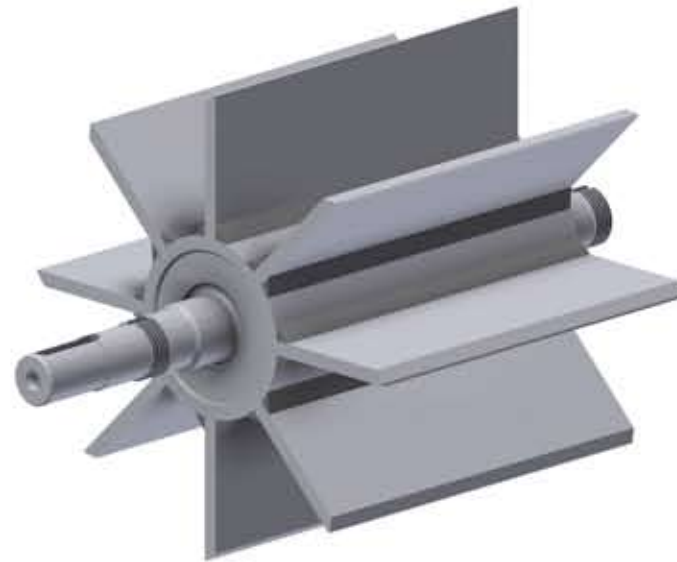


ROTOR A
STANDARD

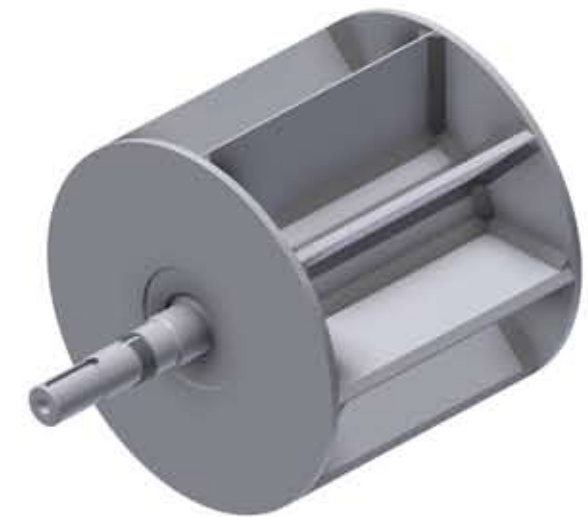


ROTOR C
TOTALLY BEVELLED

ROTOR B
UPPER BEVELLED ON HEAD



ROTOR D
THIN TIPS



**CLOSED
ROTOR**



ROTOR D
TOUGH TIPS

**PARTIAL
ROTOR**



ROTOR E
HARMONIC SS TIPS

