

SGA2 DOUBLE CYLINDER KNIFE VALVE

SLIDE GATE VALVES SGA2 are designed to shut off the flow of product from outlets of dry bulk storage bins, silos, conveyors and other discharge points. It is recommended for hopper with weighing cells and dosing units since it can avoid any reading error.

SGA2 is used where dust sealing is requested. The self-calibrated spring ensures the valve a long durability and reduces SGA2 wear and tear. Slide gate valve is suitable for the most demanding application on market. Its compact size allows a wide variety of installations.



APPLICATIONS

- GRAVIMETRIC FLOW
- POWDER
- GRANULE
- PELLETS
- MOCA – EC1935/2004

DESIGN

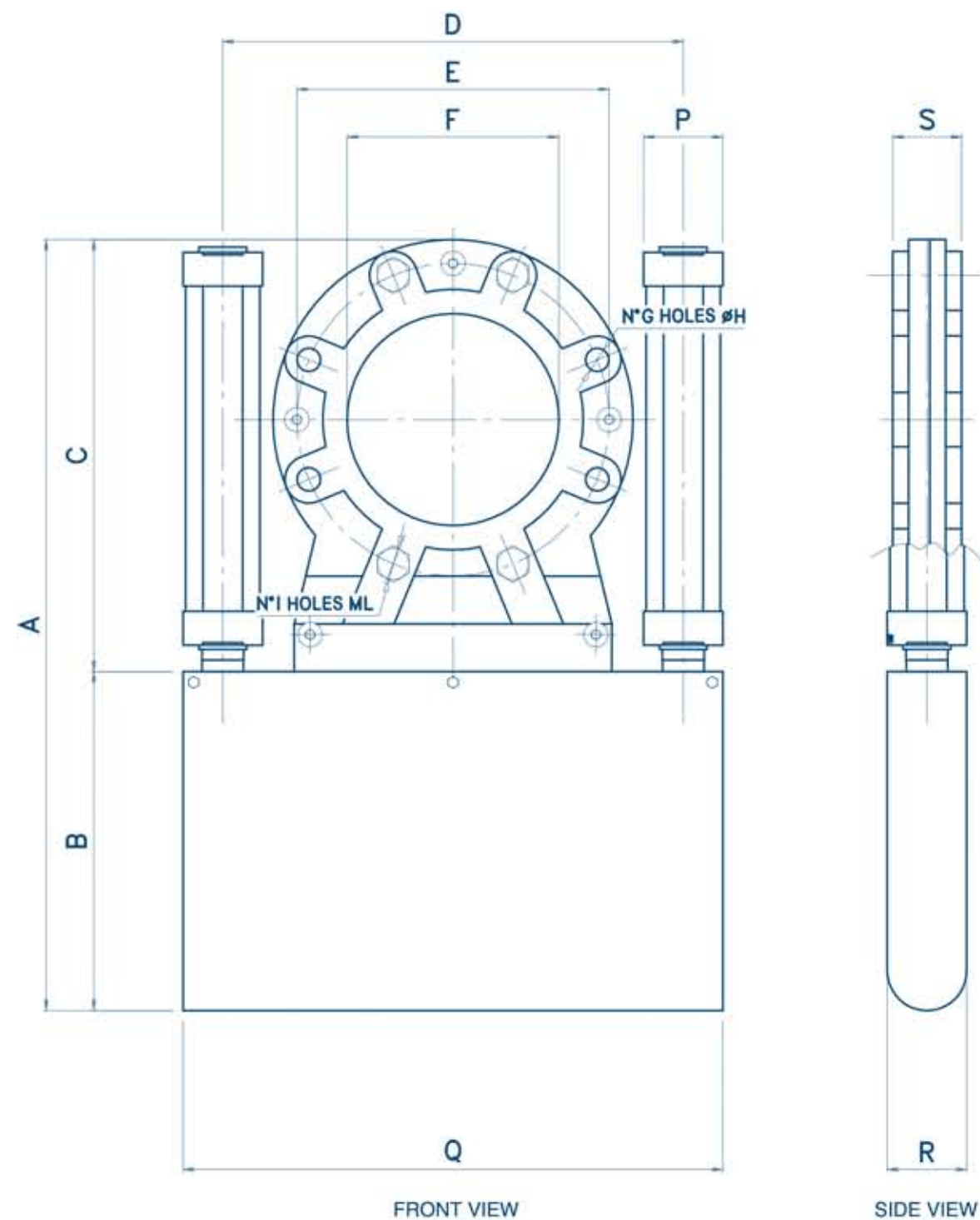
- SIZE: DN 150, DN 200, DN 250
- BODY: CASTING ALUMINIUM
- BLADE: SS304/SS316L
- MAIN SEAL: NOVATRON
- OPERATION: DOUBLE CYLINDER

FEATURES

- PRESSURE: ATM, 1 BAR
- TEMPERATURE: MAX 100 °C
- RUGGED DESIGN
- LONG LIFE

OPTIONALS

- SPECIAL EXECUTION FOR ABRASIVE PRODUCT
- MATERIAL ACCORDING WITH EC1935/2004
- VARIOUS CHEMICAL TREATMENT ON BODY/FLAP
- VARIOUS SEAL MATERIAL
- HIGH TEMPERATURE VERSION
- CUSTOM SIZE



	A	B	C	D	E	F	G x H	I x ML	P	R	S	Q
150	670	295	375	386	Ø240	Ø153	4 x Ø22	4 x M20	95	112	65	485
200	770	345	425	441	Ø295	Ø200	4 x Ø22	4 x M20	95	112	65	540
250	895	395	500	515	Ø350	Ø254	6 x Ø22	6 x M20	115	112	65	640

BROCHURE



COMPLIANCE



II 3D IIC T135°C Dc X