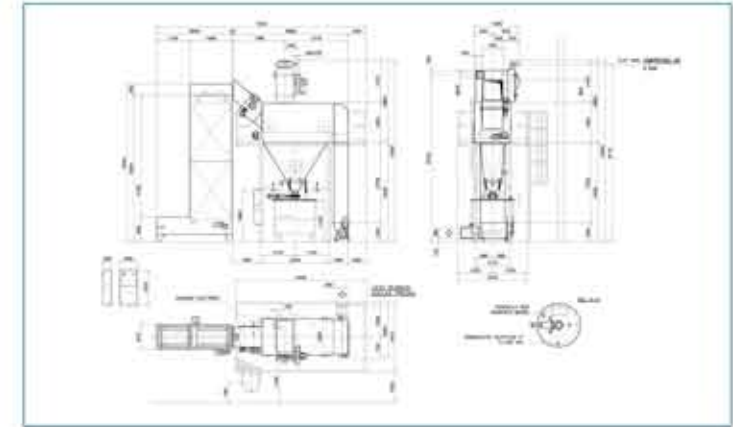


SVR EL Project 1

SVR EL
ELEVATOR



TECHNICAL NOTES

SCOPE OF SUPPLY: *discharge to underneath mixer tank*

CUSTOMER'S NEED: *special discharge and cover, tight seal during the discharge, ATEX version, movable mixer tank*

FLOWRATE: *4 tons/h*

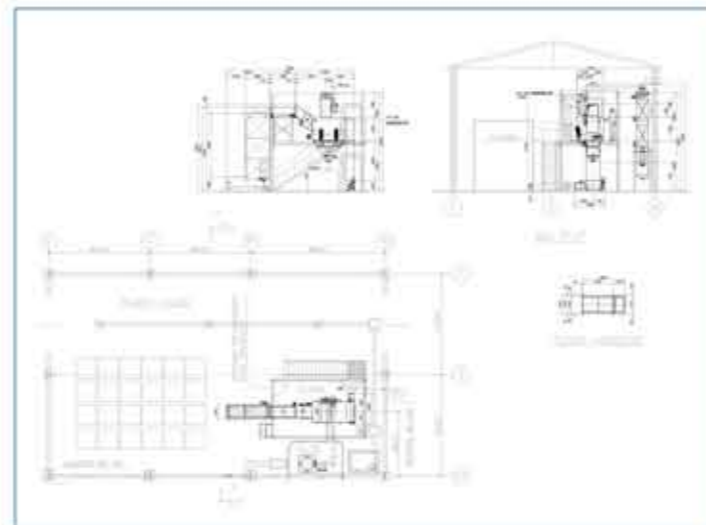
MATERIAL: *various fine powder*

KIND OF BAG: *plastic/paper*

MATERIAL SUPPLIED: *free bag*

EQUIPMENT: *SVR 300 with elevator and special cover*

SVR EL Project 2



TECHNICAL NOTES

SCOPE OF SUPPLY: *filling tanks*

CUSTOMER'S NEED: *explosion proof version, any dispersion after the cutting/discharge*

FLOWRATE: *5 tons/h*

MATERIAL: *various chemical additives*

KIND OF BAG: *plastic/paper*

MATERIAL SUPPLIED: *free bag*

EQUIPMENT: *SVR 300 with elevator and suppressor*

SVR EL Project 3



TECHNICAL NOTES

SCOPE OF SUPPLY: *filling tanks*

CUSTOMER'S NEED: *any dust dispersion, compatible version in food grade, minimal inner residual*

FLOWRATE: *2 tons/h*

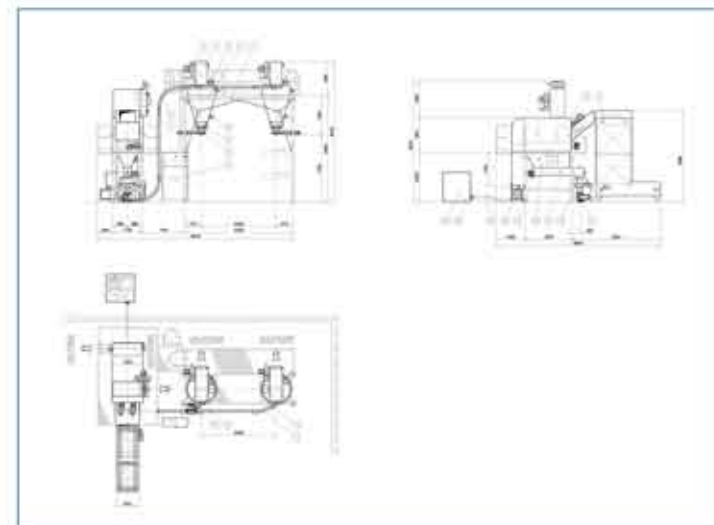
MATERIAL: *diatomaceous earth*

KIND OF BAG: *20-22-25 kg paper*

MATERIAL SUPPLIED: *free bag*

EQUIPMENT: *SVR 300 with elevator*

SVR EL Project 4



TECHNICAL NOTES

SCOPE OF SUPPLY: *filling mixer*

CUSTOMER'S NEED: *optimization of available space,
zero dispersion of material during the discharging*

FLOWRATE: *8 tons/h*

MATERIAL: *talc, PVC resin, calcium carbonate*

KIND OF BAG: *paper*

MATERIAL SUPPLIED: *free bag*

EQUIPMENT: *SVR 600 with elevator and filter*