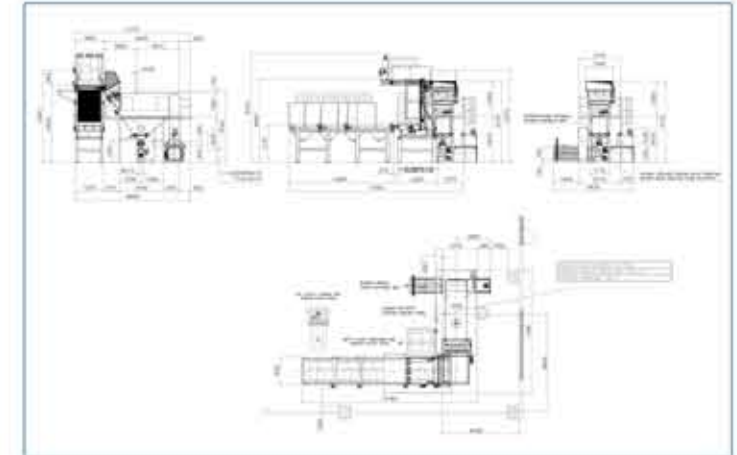


# SVR Depa Project 1

**SVR DEPA**  
DEPALLETIZER



## TECHNICAL NOTES

**SCOPE OF SUPPLY:** *filling several silos*

**CUSTOMER'S NEED:** *pallet loading at 90°*

**FLOWRATE:** *22 tons/h*

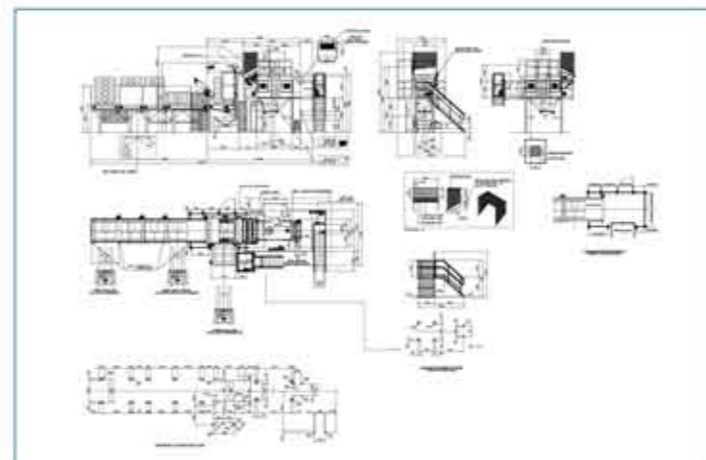
**MATERIAL:** *several kind of plastic granules*

**KIND OF BAG:** *plastic*

**MATERIAL SUPPLIED:** *on pallet with strong glue every hand*

**EQUIPMENT:** *SVR DEPA with hydraulic baler*

# SVR Depa Project 2



## TECHNICAL NOTES

**SCOPE OF SUPPLY:** filling silos

**CUSTOMER'S NEED:** high security level, partial discharging, easy removing of full pallet, stressful condition

**FLOWRATE:** 10 tons/h

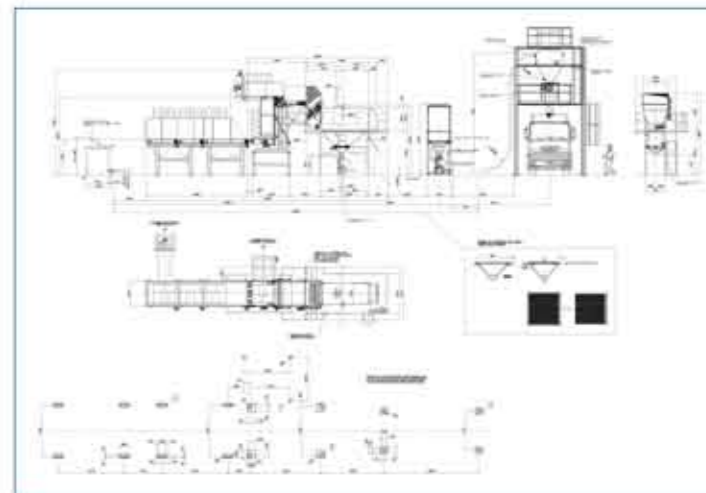
**MATERIAL:** PP and general plastic granule

**KIND OF BAG:** plastic

**MATERIAL SUPPLIED:** on pallet

**EQUIPMENT:** SVR 600 with special depalletizer and safety equipment designed in according to SIL2 Pl d

# SVR Depa Project 3



## TECHNICAL NOTES

**SCOPE OF SUPPLY:** filling truck

**CUSTOMER'S NEED:** filling less than 1 hour and 45 minutes, any empty bag residual after the cutting

**FLOWRATE:** 20 tons/h

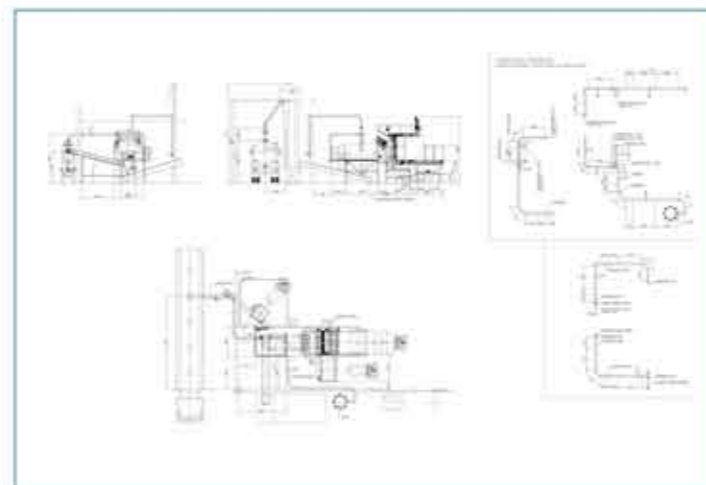
**MATERIAL:** various plastic granule

**KIND OF BAG:** plastic

**MATERIAL SUPPLIED:** on pallet

**EQUIPMENT:** SVR 1000 complete of depalletizer, empty stacker and full pallet unit

# SVR Depa Project 4



## TECHNICAL NOTES

**SCOPE OF SUPPLY:** *filling tanks*

**CUSTOMER'S NEED:** *long life for blade, robust execution, ATEX Version*

**FLOWRATE:** *10 tons/h*

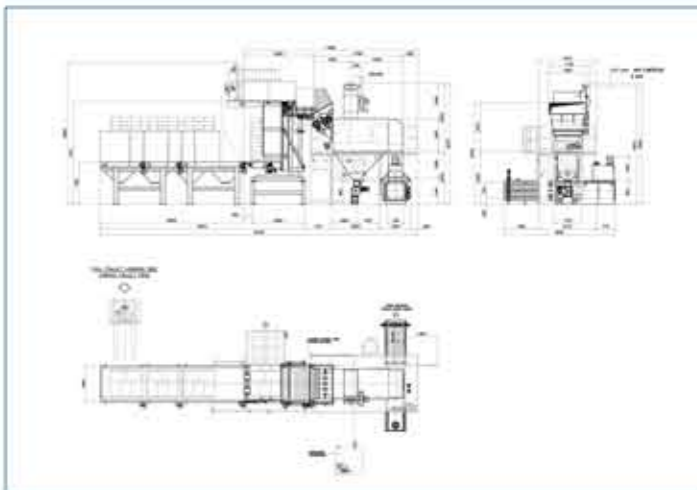
**MATERIAL:** *coffee beans*

**KIND OF BAG:** *raffia*

**MATERIAL SUPPLIED:** *on large pallet*

**EQUIPMENT:** *Special SVR 600 with larger depalletizer and special cutting section*

# SVR Depa Project 5



## TECHNICAL NOTES

**SCOPE OF SUPPLY:** *filling silos*

**CUSTOMER'S NEED:** *high throughput, minimal maintenance, easy integration to their system*

**FLOWRATE:** *25 tons/h*

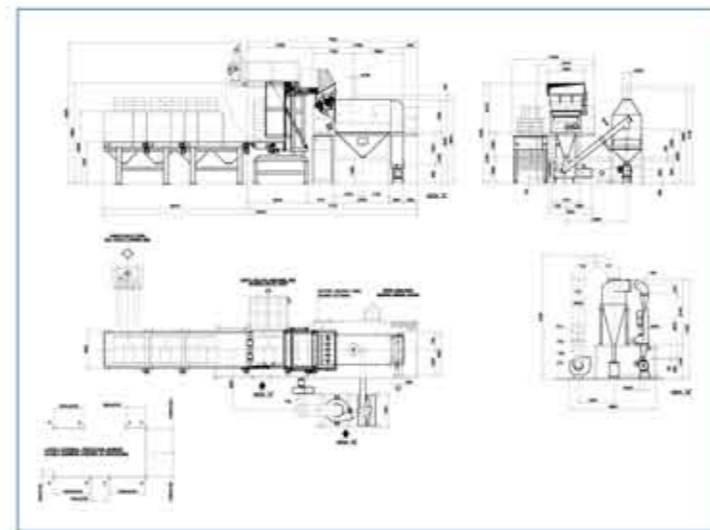
**MATERIAL:** *various plastic granule*

**KIND OF BAG:** *plastic*

**MATERIAL SUPPLIED:** *on pallet*

**EQUIPMENT:** *SVR 1000 with hydraulic press and accessories for pneumatic conveying*

# SVR Depa Project 6



## TECHNICAL NOTES

**SCOPE OF SUPPLY:** filling truck

**CUSTOMER'S NEED:** any empty bag residual after the discharge, high throughput, low maintenance

**FLOWRATE:** 20 tons/h

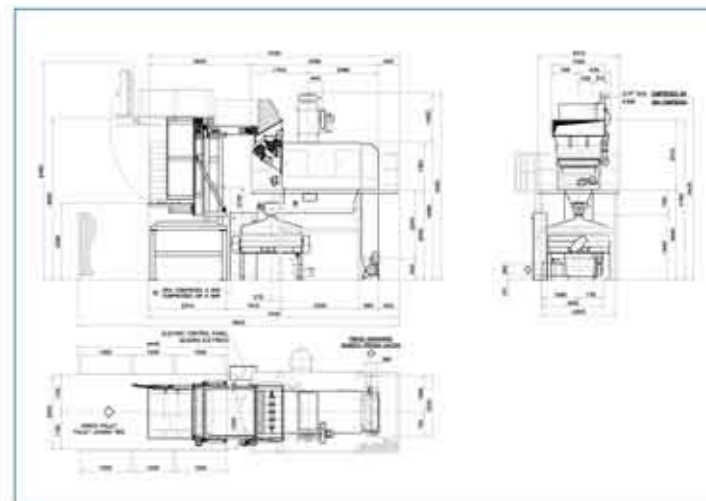
**MATERIAL:** various plastic granule

**KIND OF BAG:** plastic

**MATERIAL SUPPLIED:** on pallet

**EQUIPMENT:** SVR 1000 with depalletizer, deduster, various accessories

# SVR Depa Project 7



## TECHNICAL NOTES

**SCOPE OF SUPPLY:** filling silos

**CUSTOMER'S NEED:** labor saving, optimize the recycling and its saving, ergonomic handling

**FLOWRATE:** 10 tons/h

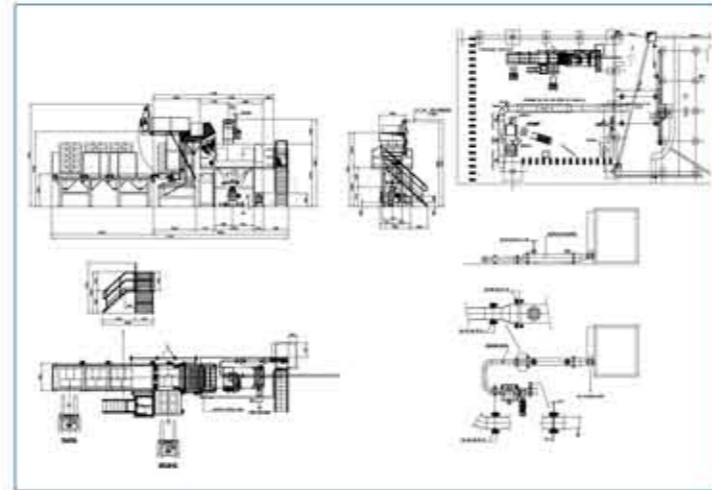
**MATERIAL:** Gypsum

**KIND OF BAG:** paper

**MATERIAL SUPPLIED:** On pallet

**EQUIPMENT:** SVR 600 Depalletizer complete of filtering unit and sifter

# SVR Depa Project 8



## TECHNICAL NOTES

SCOPE OF SUPPLY: *filling silos*

CUSTOMER'S NEED: *labor saving, high throughput, robust execution, low maintenance, high technology*

FLOWRATE: *15 tons/h*

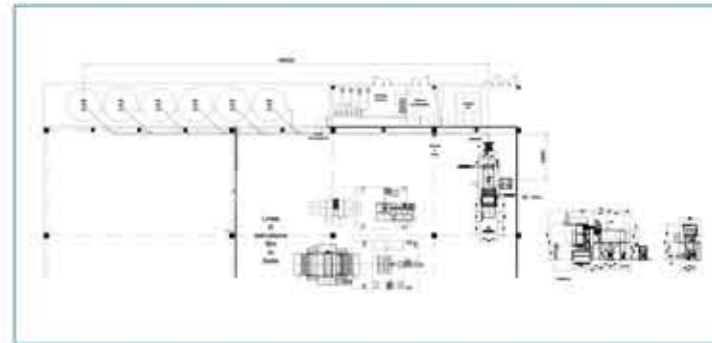
MATERIAL: *PS, GPPS, HIPS granule*

KIND OF BAG: *plastic*

MATERIAL SUPPLIED: *on pallet*

EQUIPMENT: *SVR 600 depalletizer complete of accessories for pneumatic conveying*

# SVR Depa Project 9



## TECHNICAL NOTES

SCOPE OF SUPPLY: *filling silos*

CUSTOMER'S NEED: *automatic loading, easy working, robust version*

FLOWRATE: *10 tons/h*

MATERIAL: *plastic granule*

KIND OF BAG: *plastic and paper*

MATERIAL SUPPLIED: *on pallet with glue and without*

EQUIPMENT: *SVR 600 depalletizer*